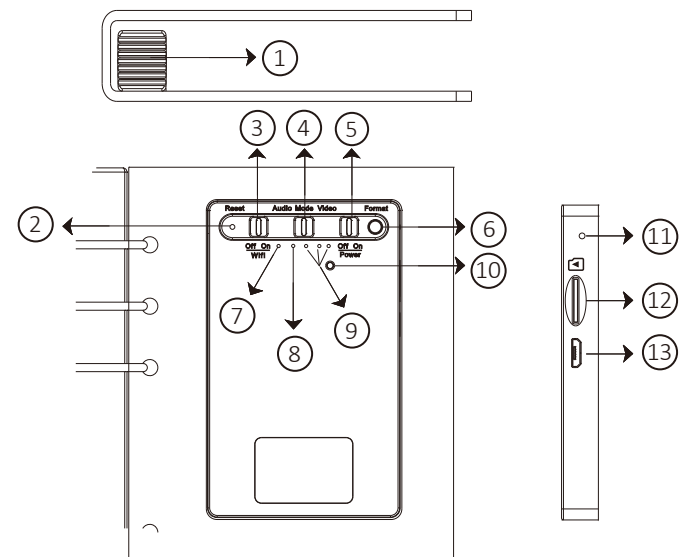


1. Names and Parts

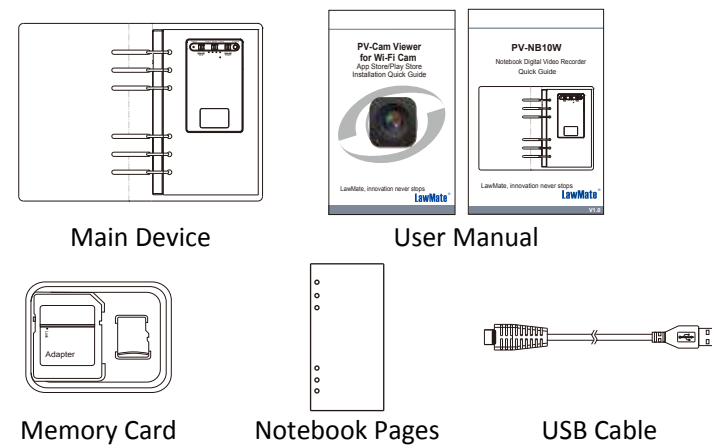


- | | |
|---|----------------------------------|
| 1. Lens | 7. Red LED - Recording |
| 2. Reset Button | 8. Orange LED - P2P |
| 3. Wi-Fi On / Off | 9. Blue LED - Power and Charging |
| 4. Recording Mode Video / Audio | 10. Default Button |
| 5. Power On / Off | 11. Microphone |
| 6. LED Display On / Off / Format Button | 12. Memory Card Slot |
| | 13. USB Port |

※ Microphone is not available for USA market.

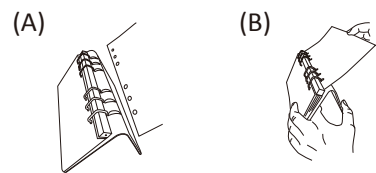
1

2. Package Content



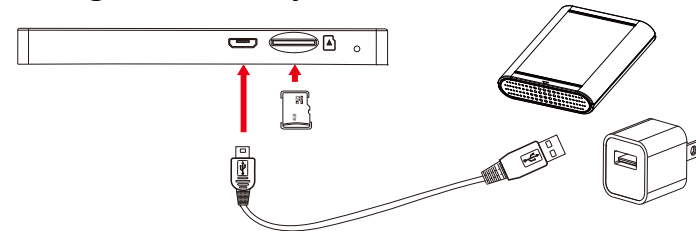
3. Add Pages to Notebook

- 3.1 Open the notebook to the angle as shown in illustration (A).
- 3.2 Add the pages from the gap of the notebook binder as shown in illustration (B).
- 3.3 Tear down the used pages if you want to remove them.



2

4. Charge the Battery



Connect the micro USB end of the cable to ⑬ and connect the other end to an USB power source, or plug it to a power bank of your own choice. The power bank then works as an extra battery. The three blue LED will be on and running during charging. When charging is complete, the three blue LED will all be on.

5. LED Indicators

3 blue LED all on	■ ■ ■	LED display On/Fully Charged
Blinking blue LED	■ ■ ■	Device Need Charge
Running blue LED	■ ■ ■	Charging
Solid red LED	■	Recording
Blinking red LED	■	Pause Recording / Stand-by Mode / Memory Card Full
Blinking orange LED	■	Searching P2P
Solid orange LED	■	P2P Connected

※ Warranty will be void if the serial number sticker is tampered.

3

6. Operation

6.1 LED Display

To check the battery capacity and device status, turn on the LED display by pressing ⑥. Press ⑥ again to turn it off.

6.2 Power On

To power on the device, insert the memory card and switch ⑤ to On. The red LED will blink in stand-by mode.

6.3 Recording Mode

6.3.1 Video Recording

Switch ④ to Video and the red LED will be solid on.

6.3.2 Audio Recording

Switch ④ to Audio and the red LED will be solid on.

6.4 Stop Recording

To stop recording and go back to stand-by mode, switch ④ to the middle and the red LED will flicker.

6.5 Wi-Fi Functions

6.5.1 To build Wi-Fi connection, switch ③ to On and follow the instructions in PV Cam Viewer Quick Guide. The orange LED will be solid on when connected to Wi-Fi.

6.5.2 For more Wi-Fi function, please refer to the PV Cam Viewer for Wi-Fi Cam Quick Guide.

6.6 Power Off

To power off the device, switch ⑤ to Off then press ⑥ to turn off the LED display.

4

6.7 Reset

If the device is working abnormally, press ② to reset.

6.8 Default

6.8.1 To restore Wi-Fi password and SSID, turn on the device, press and hold ⑩ for at least 3 seconds and then let go. The red and orange LED will turn on and then off.

6.8.2 To restore all default settings, turn on the device, press and hold ⑩ for at least 10 seconds and then let go. The red and orange LED will turn on and then off.

7. Format Memory Card

7.1 Format on Device

- 7.1.1 Press and hold ⑥, and turn on the device.
- 7.1.2 You will see blue LED all on and red LED flickering.
- 7.1.3 The device will power off when format is complete.

7.2 Format on PV Cam Viewer APP

- 7.2.1 Go to program setting on PV Cam Viewer App
- 7.2.2 Press Format Card and confirm command.

※ It is important to format the card when using it for the first time.

8. Date and Time Setting

8.1 On PC (Windows System)

- 8.1.1 Right-click on Windows desktop. Choose Notepad to create a *.txt file. Then double-click the text file.

5

- 8.1.2 Suppose current time is April 11, 2018 15:00. Enter date and time information as 2018.04.11 15:00:00
Note: A space must be present in between date and hour, time must be 24-hour format.

- 8.1.3 Save file name as settime.txt to the root directory of the memory card.

- 8.1.4 Insert the memory card to the slot then power on the device. The setting is now completed.

Note: When the date and time information is successfully set to the device, the settime.txt file should not be visible when you connect the device to the computer again.

8.2 On PV Cam Viewer APP

Please refer to the "Synchronize the Time" steps on the PV Cam Viewer for Wi-Fi Cam Quick Guide.

9. Download Files to PC

- 9.1 Use the memory card reader to download video / photo files.
- 9.2 With the device powered on and memory card inserted, connect the device to PC by USB connection. It will be recognized by PC as an external drive for user to download the video recordings and photo files.

6

10. Specification

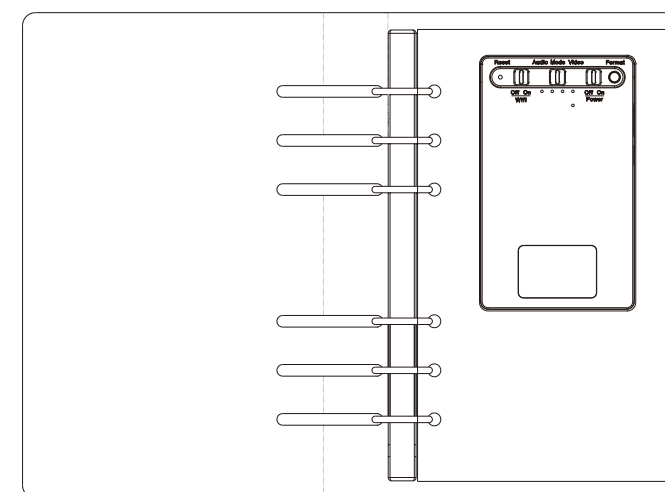
Built-in Camera Module	
Built-in Image Sensor	1/3" progressive CMOS sensor
Sensor Resolution	2304x1536
Sensor Sensitivity	3.3 Lux @ F 2.0
Lens F/No.	F 3.2
Focal Length	4mm
Angle of View	66°
Video Spec.	
Algorithm	H.264, JPEG
File Format	MOV, JPG
Video Recording Mode	Manual
Recording Capability	1920x1080
Frame Rate	Up to 30 fps
Photo Capability	5M (2952x1944)
Audio Spec.	
Algorithm	PCM
File Format	WAV
Storage & I/O	
Memory Type	Memory Card (Support up to 32GB)
Data Interface	Micro USB 2.0
Wi-Fi Spec.	
Wi-Fi	Built-in Wi-Fi Module (IEEE 802.11b/g/n)
Wi-Fi Protocol	RTSP
Misc.	
Date/Time Table	YYYY.MM.DD HH:MM:SS
Snapshot	Recording and playback video (via smartphone)
Power	
Power Input	DC 5V
Power Consumption	(Video) 350mA-380mA (Wi-Fi+80mA) / (Voice) 90mA
Charging Time	150min (680mA)
Battery Input	DC 3.7V / 1400mA polymers battery (XKS04355)
Battery Lifetime	Video recording 150-210min Audio recording 900min
Physical	
Dimension	244x130x25 (mm)
Weight	306g

7

PV-NB10W

1080P Notebook Wi-Fi DVR

Quick Guide



LawMate, innovation never stops

LawMate®

V1.0